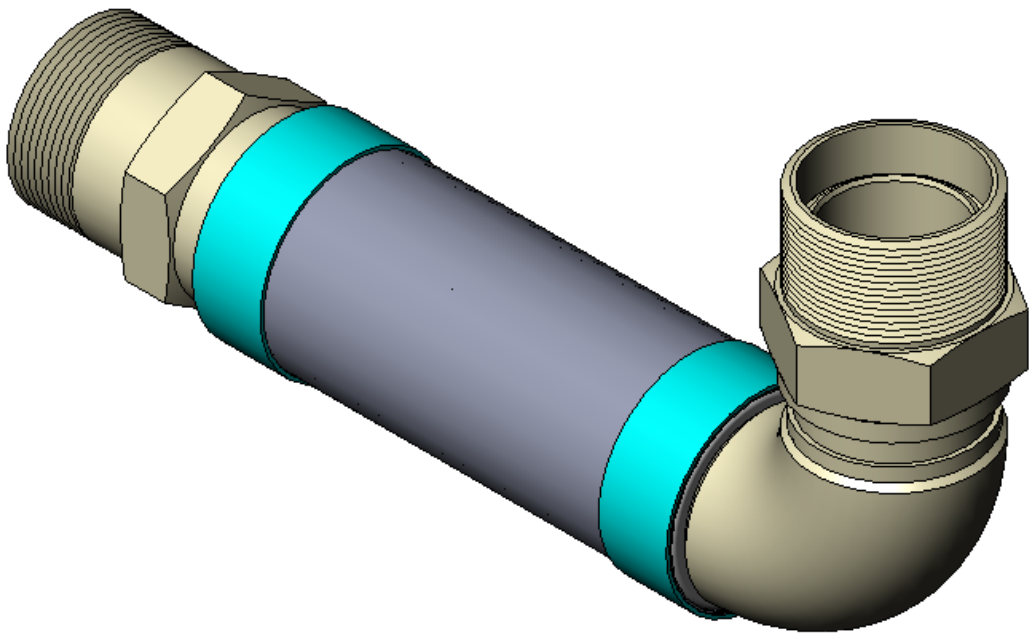
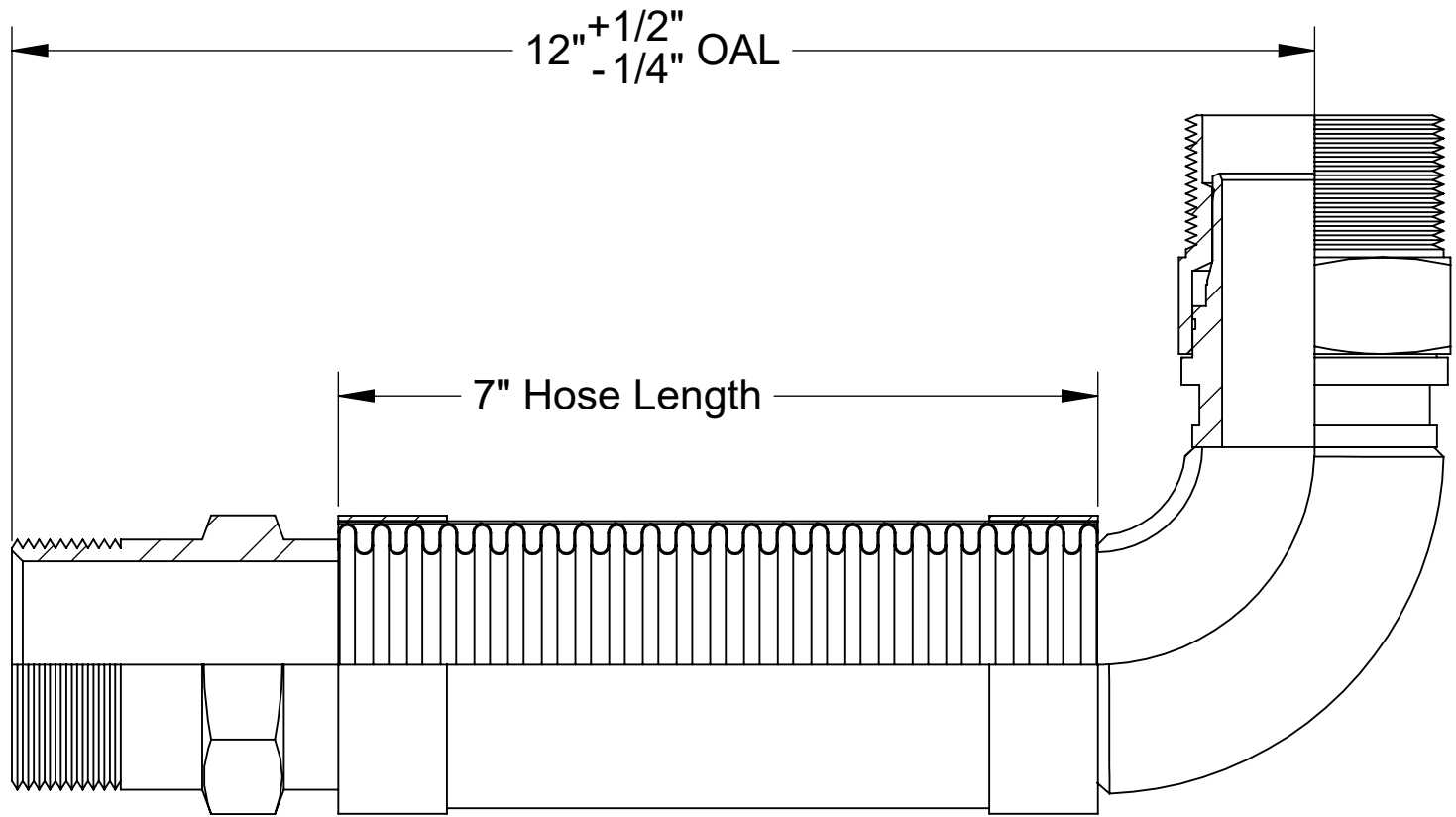


8 7 6 5 4 3 2 1

REVISIONS			
REV.	DESCRIPTION	DATE	APPROVED
-		8/18/2023	



----- COMPONENTS LIST -----

ITEM #	QTY.	PART NUMBER	DESCRIPTION	MATERIAL	WEIGHT
1	1	HOSE	300 Series Stainless Corrugated Hose	Stainless Steel	0.41
2	2	BRAID	300 Series Stainless Steel	Stainless Steel	0.03
3	1	BRAID COLLAR	0.05" Thick	Stainless Steel	0.09
4	1	2" MALE SWIVEL	2" Male Swivel, 2"x11-1/2" Thread, 2.38" Hex	Stainless Steel	0.93
5	1	2" ELBOW	2" Short Radius Elbow, Sch. 40	Stainless Steel	0.61
6	1	2" MALE	2" Male, 2"x11-1/2" Thread, 2.38" Hex	Stainless Steel	1.18



**HOSE MASTER**

1233 East 222nd Street • Cleveland, Ohio 44117  
 (800) 221-2319 • Fax: (216) 481-7557 • www.hosemaster.com  
 Cleveland • Houston • Atlanta • Reno

**ISO 9001**  
 Registered Quality System

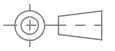


REFERENCE: Fire-Shield - 2" Male x 2" 90 Degree Male Swivel x 12" OAL

DATE: 9/7/2023

DESCRIPTION:  
 2" ID x 12" OAL 300 Series Stainless Corrugated Hose covered by 300 Series  
 Stainless Braid. UL Approved 2" Male Connector x 2" ID 90 Degree Male Swivel  
 Connector

PROJECTION:



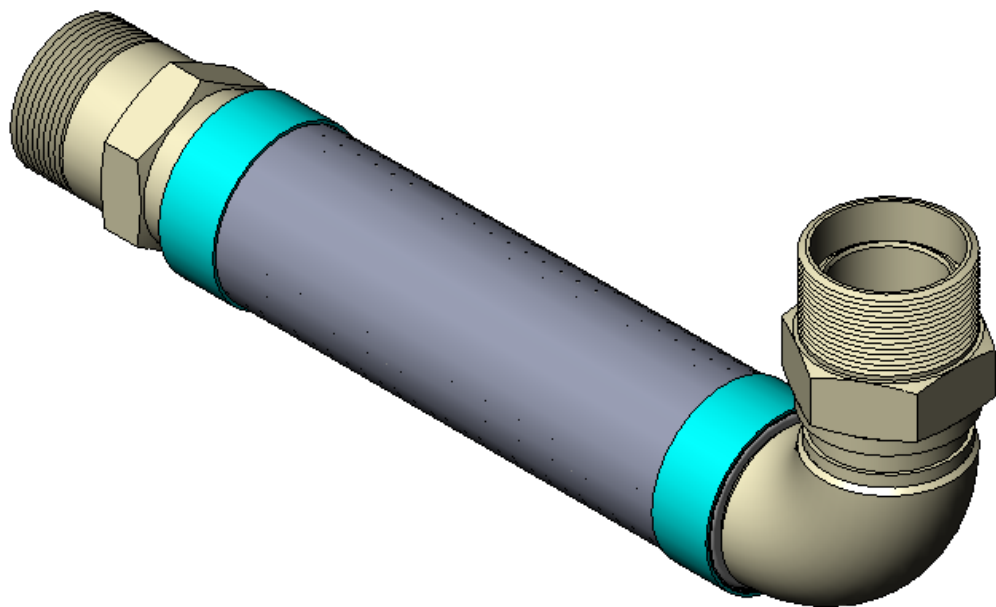
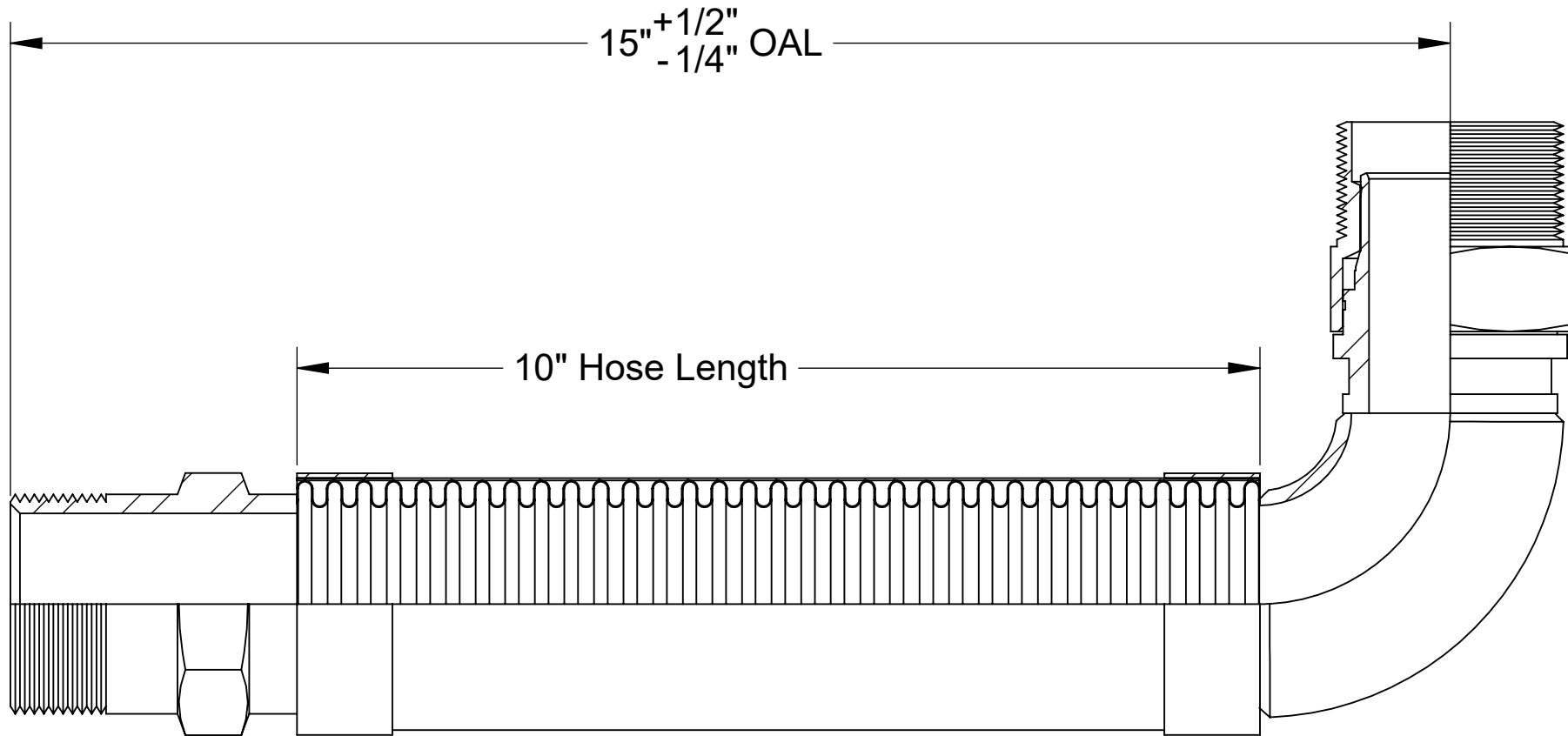
DRAWING # **FSMSE0200x12**

REV. SHEET 1 OF 1

8 7 6 5 4 3 2 1

8 7 6 5 4 3 2 1

REVISIONS			
REV.	DESCRIPTION	DATE	APPROVED
-		8/18/2023	



----- COMPONENTS LIST -----					
ITEM #	QTY.	PART NUMBER	DESCRIPTION	MATERIAL	WEIGHT
1	1	HOSE	300 Series Stainless Corrugated Hose	Stainless Steel	0.57
2	2	BRAID	300 Series Stainless Steel	Stainless Steel	0.05
3	1	BRAID COLLAR	0.05" Thick	Stainless Steel	0.09
4	1	2" MALE SWIVEL	2" Male Swivel, 2"x11-1/2" Thread, 2.38" Hex	Stainless Steel	0.93
5	1	2" ELBOW	2" Short Radius Elbow, Sch. 40	Stainless Steel	0.61
6	1	2" MALE	2" Male, 2"x11-1/2" Thread, 2.38" Hex	Stainless Steel	1.18



**HOSE MASTER**

1233 East 222nd Street • Cleveland, Ohio 44117  
 (800) 221-2319 • Fax: (216) 481-7557 • www.hosemaster.com  
**Cleveland • Houston • Atlanta • Reno**



REFERENCE: Fire-Shield - 2" Male x 2" 90 Degree Male Swivel x 15" OAL

DATE: 9/7/2023

DESCRIPTION:  
 2" ID x 15" OAL 300 Series Stainless Corrugated Hose covered by 300 Series Stainless Braid. UL Approved 2" Male Connector x 2" ID 90 Degree Male Swivel Connector



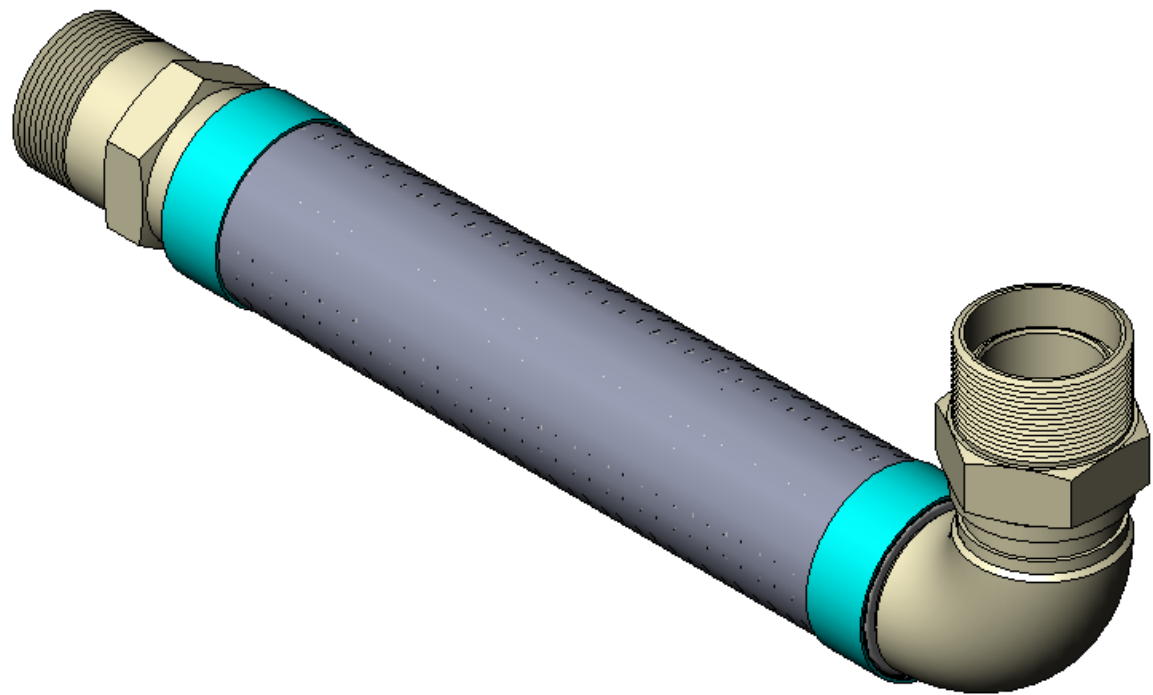
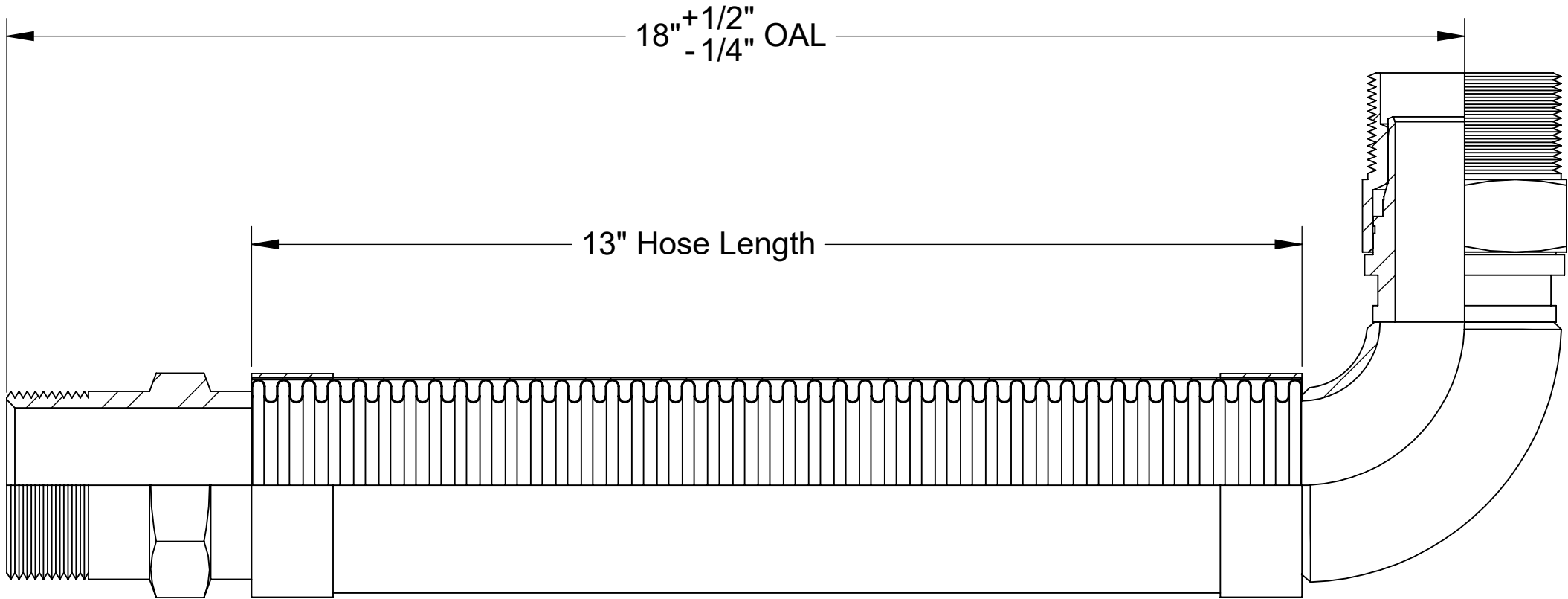
DRAWING # **FSMSE0200x15**

REV. SHEET 1 OF 1

8 7 6 5 4 3 2 1

8 7 6 5 4 3 2 1

REVISIONS			
REV.	DESCRIPTION	DATE	APPROVED
-		8/18/2023	



----- COMPONENTS LIST -----

ITEM #	QTY.	PART NUMBER	DESCRIPTION	MATERIAL	WEIGHT
1	1	HOSE	300 Series Stainless Corrugated Hose	Stainless Steel	0.75
2	2	BRAID	300 Series Stainless Steel	Stainless Steel	0.06
3	1	BRAID COLLAR	0.05" Thick	Stainless Steel	0.09
4	1	2" MALE SWIVEL	2" Male Swivel, 2"x11-1/2" Thread, 2.38" Hex	Stainless Steel	0.93
5	1	2" ELBOW	2" Short Radius Elbow, Sch. 40	Stainless Steel	0.61
6	1	2" MALE	2" Male, 2"x11-1/2" Thread, 2.38" Hex	Stainless Steel	1.18



**HOSE MASTER**

1233 East 222nd Street • Cleveland, Ohio 44117  
 (800) 221-2319 • Fax: (216) 481-7557 • www.hosemaster.com  
 Cleveland • Houston • Atlanta • Reno

**ISO 9001**  
 Registered Quality System

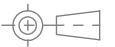


REFERENCE: Fire-Shield - 2" Male x 2" 90 Degree Male Swivel x 18" OAL

DATE: 9/7/2023

DESCRIPTION:  
 2" ID x 18" OAL 300 Series Stainless Corrugated Hose covered by 300 Series Stainless Braid. UL Approved 2" Male Connector x 2" ID 90 Degree Male Swivel Connector

PROJECTION:



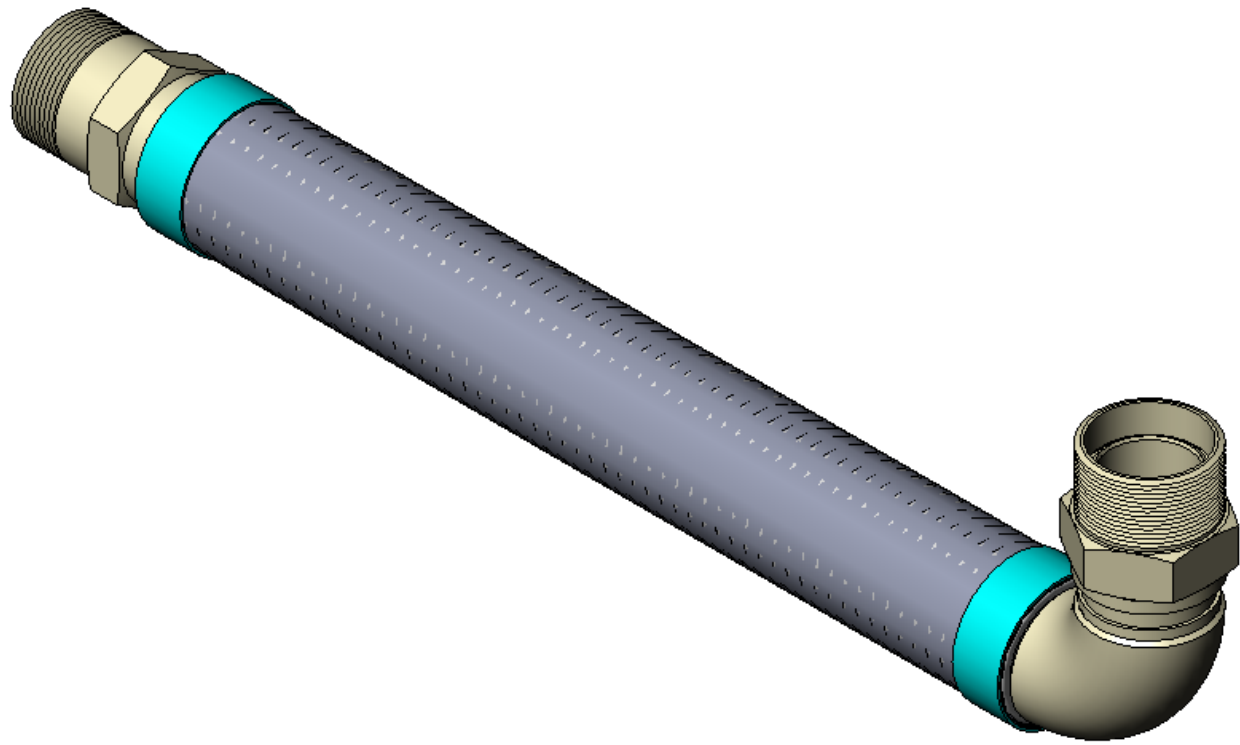
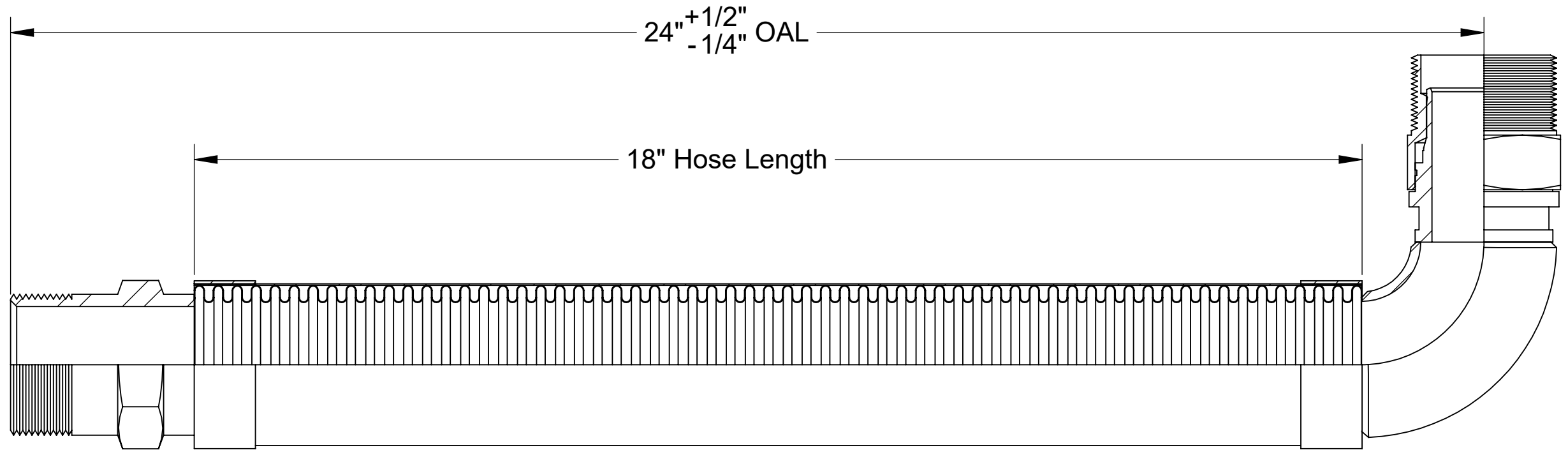
DRAWING # **FSMSE0200x18**

REV. SHEET 1 OF 1

8 7 6 5 4 3 2 1

8 7 6 5 4 3 2 1

REVISIONS			
REV.	DESCRIPTION	DATE	APPROVED
-		8/18/2023	



----- COMPONENTS LIST -----					
ITEM #	QTY.	PART NUMBER	DESCRIPTION	MATERIAL	WEIGHT
1	1	HOSE	300 Series Stainless Corrugated Hose	Stainless Steel	1.09
2	2	BRAID	300 Series Stainless Steel	Stainless Steel	0.09
3	1	BRAID COLLAR	0.05" Thick	Stainless Steel	0.09
4	1	2" MALE SWIVEL	2" Male Swivel, 2"x11-1/2" Thread, 2.38" Hex	Stainless Steel	0.93
5	1	2" ELBOW	2" Short Radius Elbow, Sch. 40	Stainless Steel	0.61
6	1	2" MALE	2" Male, 2"x11-1/2" Thread, 2.38" Hex	Stainless Steel	1.18



**HOSE MASTER**

1233 East 222nd Street • Cleveland, Ohio 44117  
 (800) 221-2319 • Fax: (216) 481-7557 • www.hosemaster.com  
 Cleveland • Houston • Atlanta • Reno

**ISO 9001**  
 Registered Quality System



REFERENCE: Fire-Shield - 2" Male x 2" 90 Degree Male Swivel x 24" OAL

DATE: 9/7/2023

DESCRIPTION:  
 2" ID x 24" OAL 300 Series Stainless Corrugated Hose covered by 300 Series Stainless Braid. UL Approved 2" Male Connector x 2" ID 90 Degree Male Swivel Connector

PROJECTION:



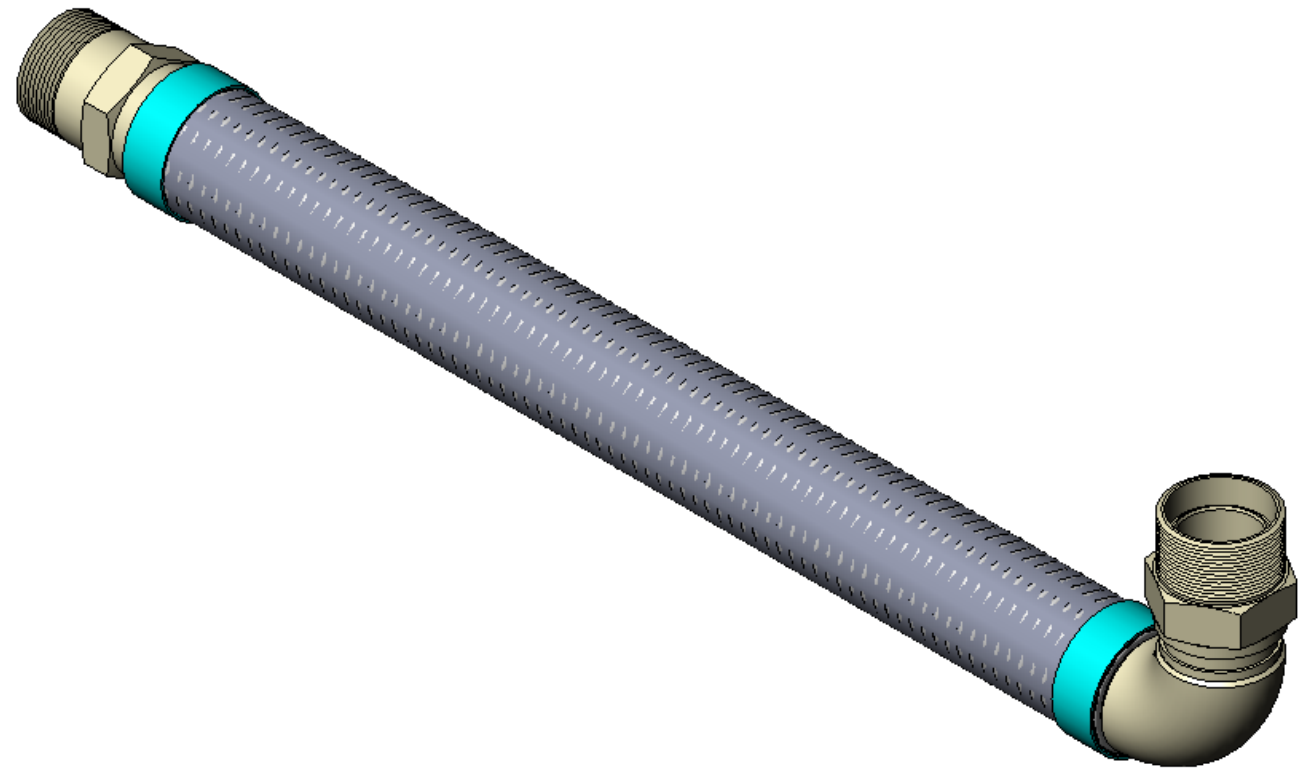
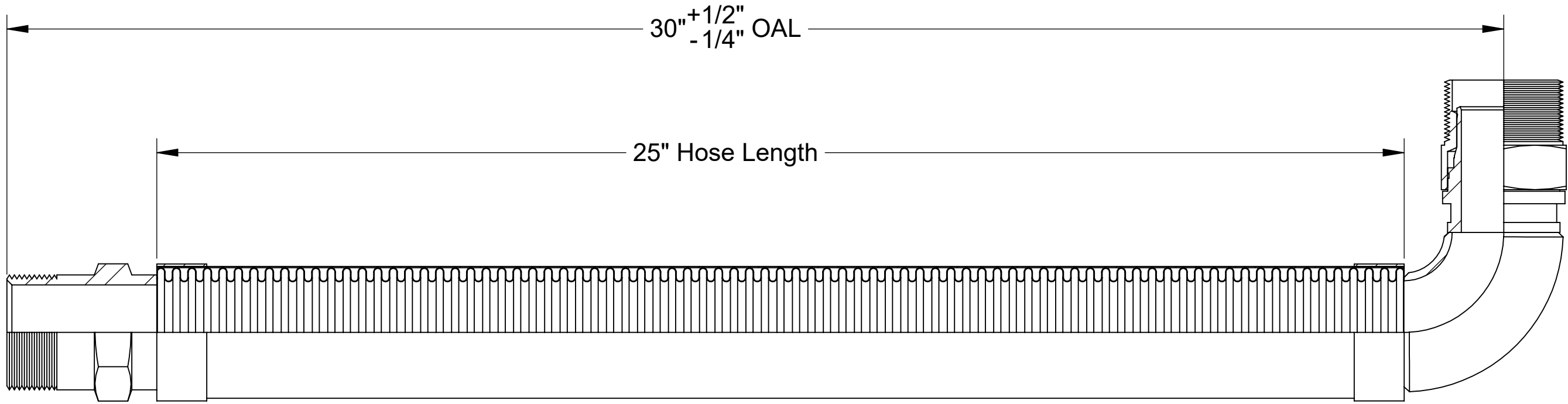
DRAWING # **FSMSE0200x24**

REV. SHEET 1 OF 1

8 7 6 5 4 3 2 1

8 7 6 5 4 3 2 1

REVISIONS			
REV.	DESCRIPTION	DATE	APPROVED
-		8/18/2023	



----- COMPONENTS LIST -----

ITEM #	QTY.	PART NUMBER	DESCRIPTION	MATERIAL	WEIGHT
1	1	HOSE	300 Series Stainless Corrugated Hose	Stainless Steel	1.43
2	2	BRAID	300 Series Stainless Steel	Stainless Steel	0.12
3	1	BRAID COLLAR	0.05" Thick	Stainless Steel	0.09
4	1	2" MALE SWIVEL	2" Male Swivel, 2"x11-1/2" Thread, 2.38" Hex	Stainless Steel	0.93
5	1	2" ELBOW	2" Short Radius Elbow, Sch. 40	Stainless Steel	0.61
6	1	2" MALE	2" Male, 2"x11-1/2" Thread, 2.38" Hex	Stainless Steel	1.18



**HOSE MASTER**

1233 East 222nd Street • Cleveland, Ohio 44117  
 (800) 221-2319 • Fax: (216) 481-7557 • www.hosemaster.com  
**Cleveland • Houston • Atlanta • Reno**

**ISO 9001**  
 Registered Quality System

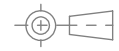


REFERENCE: Fire-Shield - 2" Male x 2" 90 Degree Male Swivel x 30" OAL

DATE: 9/7/2023

DESCRIPTION:  
 2" ID x 30" OAL 300 Series Stainless Corrugated Hose covered by 300 Series Stainless Braid. UL Approved 2" Male Connector x 2" ID 90 Degree Male Swivel Connector

PROJECTION:



DRAWING # **FSMSE0200x30**

REV. SHEET 1 OF 1

8 7 6 5 4 3 2 1