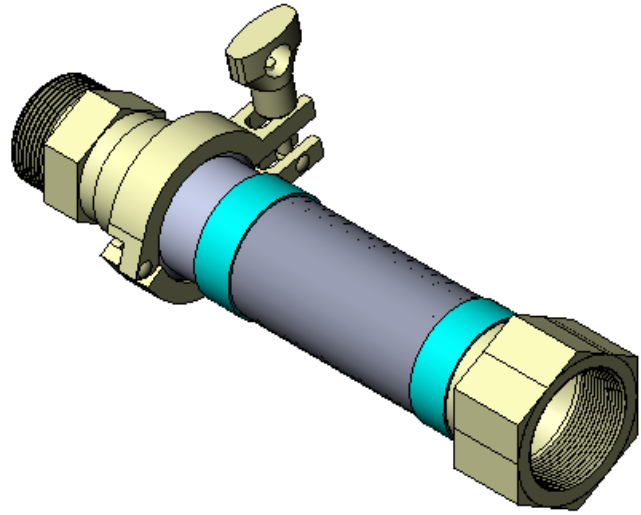
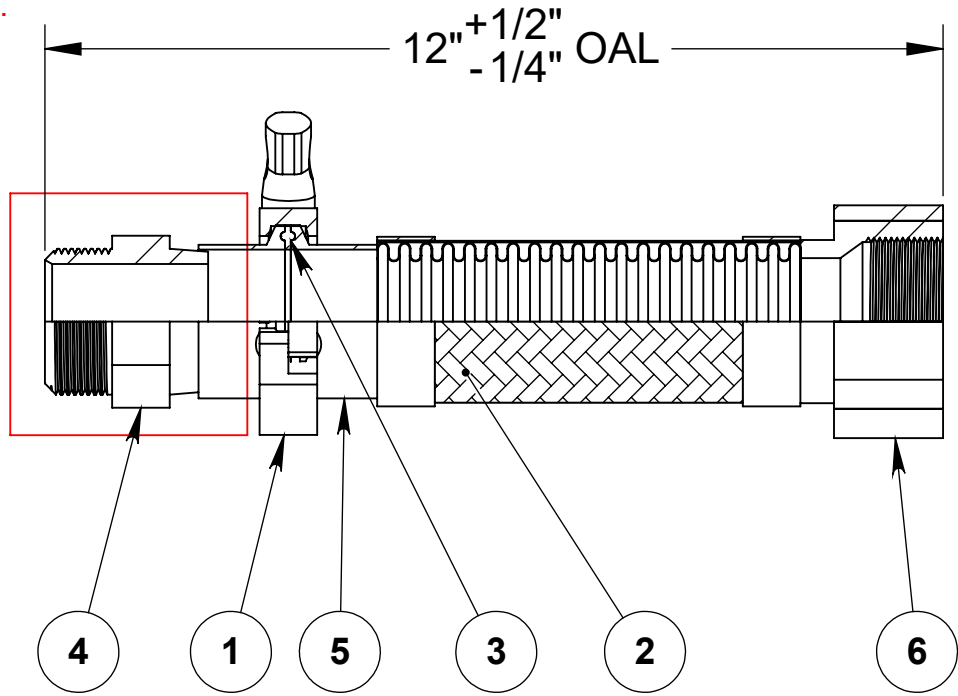


REVISIONS			
REV.	DESCRIPTION	DATE	APPROVED
-		11/7/2023	

Hex male adapter shown represents only one of the various end fittings available. Please refer to catalog for other options.



NOTE: UL & cULus APPROVED CONNECTORS

----- COMPONENTS LIST -----

ITEM #	QTY.	DESCRIPTION	MATERIAL
1	1	2" Quick Clamp Kit	304
2	1	1-1/2" AF4750	300 Series Stainless
3	1	2" QuickClamp Seal	Viton
4	1	1-1/2" Hex Male Adapter	304
5	1	2" Sanitary Flange	304
6	1	Hex Female	304



HOSE MASTER

1233 East 222nd Street • Cleveland, Ohio 44117
 (800) 221-2319 • Fax: (216) 481-7557 • www.hosemaster.com
 Cleveland • Houston • Atlanta • Reno

ISO 9001
 Registered Quality System



DESCRIPTION:

1-1/2" x 12" OAL FIRESHEILD QUICK CLAMP ASSEMBLY

DRAWING #

FSQF0150x12

DATE: 12/19/2023

PROJECTION:



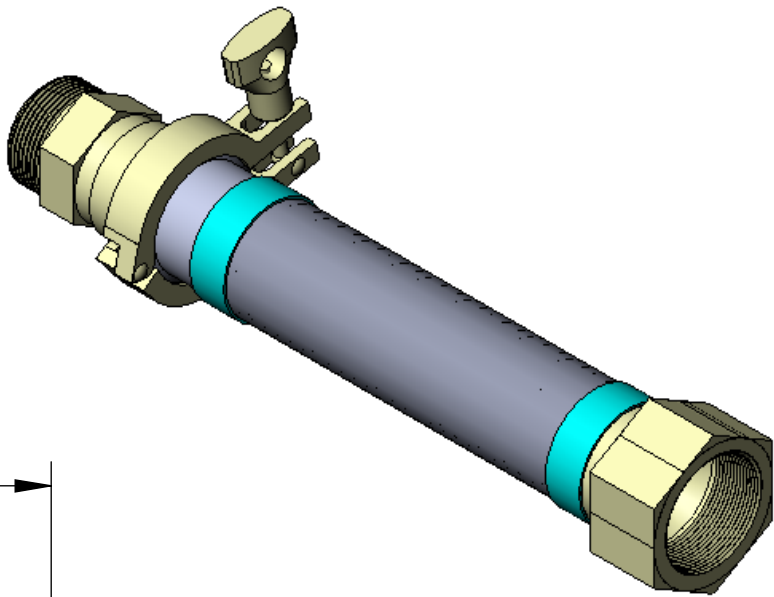
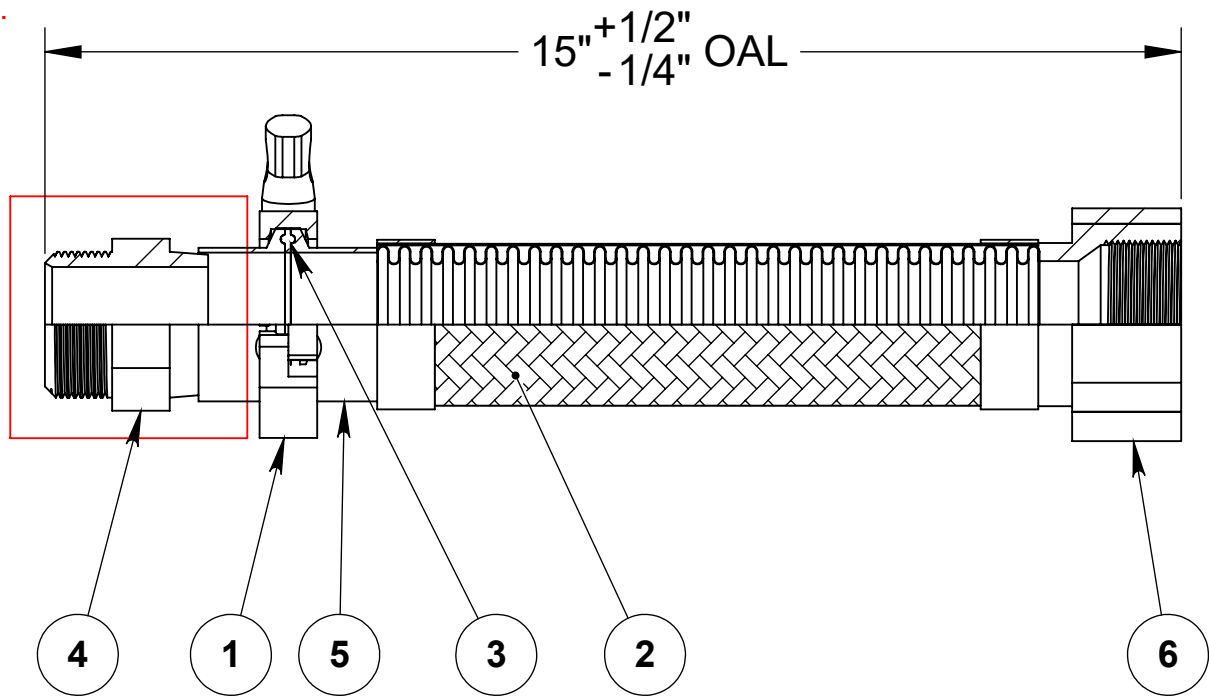
REV.

-

SHEET
 1 OF 1

REVISIONS			
REV.	DESCRIPTION	DATE	APPROVED
-		11/7/2023	

Hex male adapter shown represents only one of the various end fittings available. Please refer to catalog for other options.



NOTE: UL & cULus APPROVED CONNECTORS

----- COMPONENTS LIST -----

ITEM #	QTY.	DESCRIPTION	MATERIAL
1	1	2" Quick Clamp Kit	304
2	1	1-1/2" AF4750	300 Series Stainless
3	1	2" QuickClamp Seal	Viton
4	1	1-1/2" Hex Male Adapter	304
5	1	2" Sanitary Flange	304
6	1	Hex Female	304



HOSE MASTER

1233 East 222nd Street • Cleveland, Ohio 44117
 (800) 221-2319 • Fax: (216) 481-7557 • www.hosemaster.com
 Cleveland • Houston • Atlanta • Reno

ISO 9001
 Registered Quality System



DATE: 12/19/2023

DESCRIPTION:

1-1/2" x 15" OAL FIRESHEILD QUICK CLAMP ASSEMBLY

PROJECTION:



DRAWING #

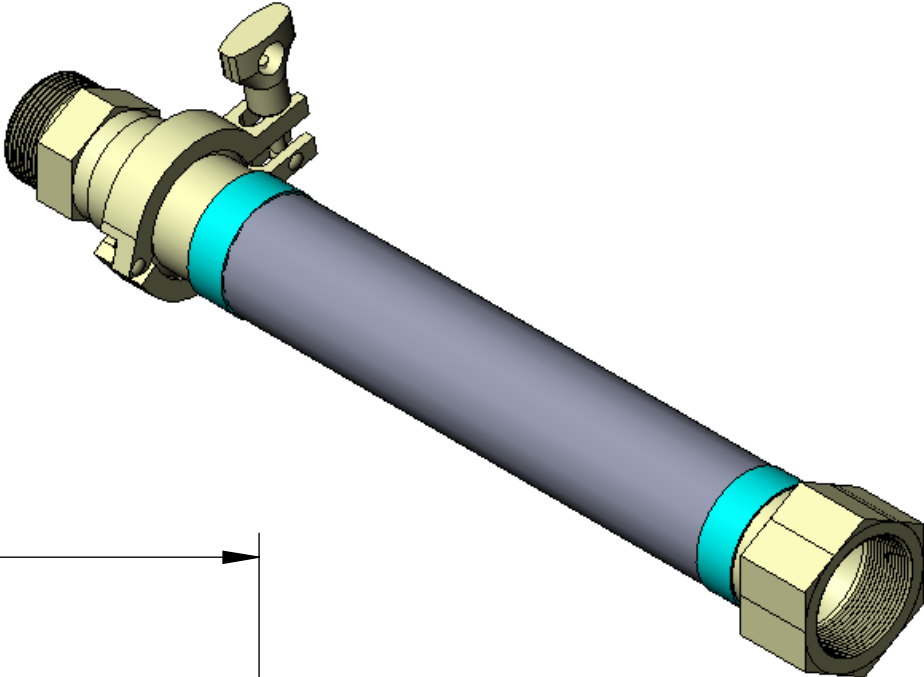
FSQF0150x15

REV.

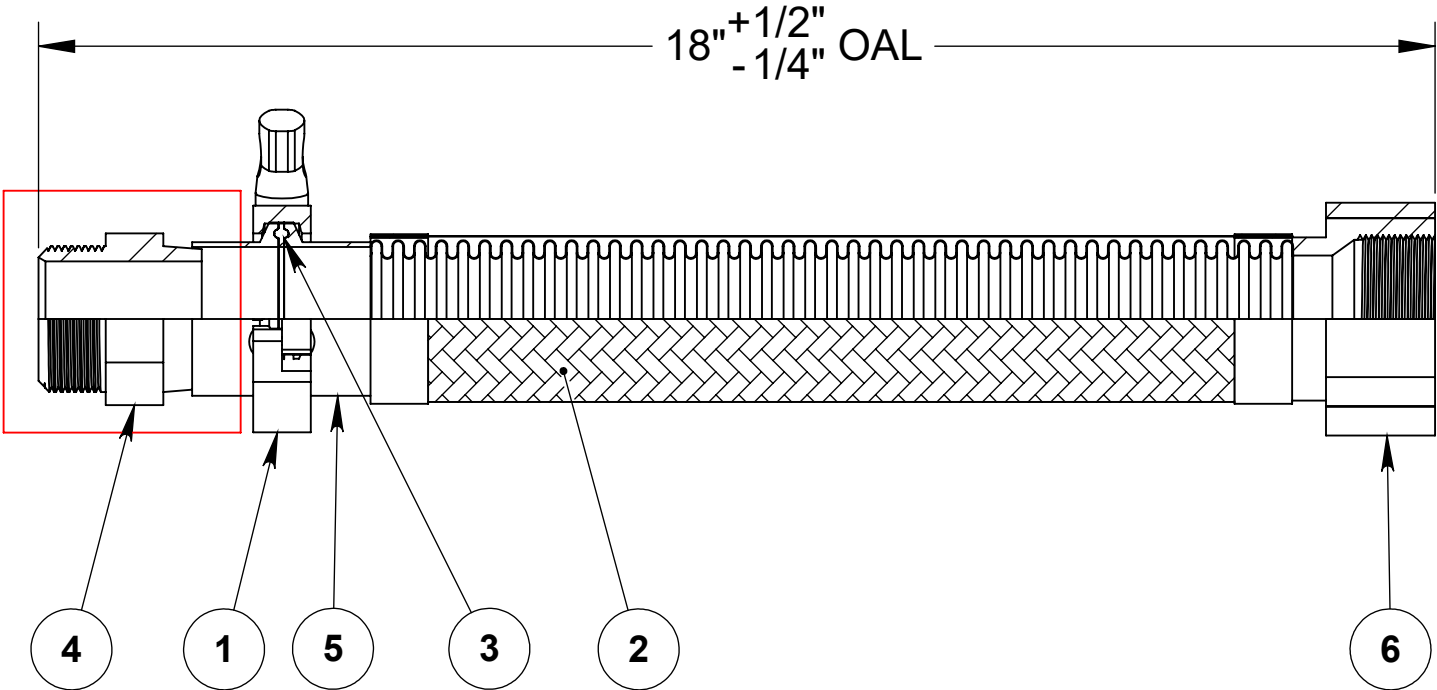
-

SHEET
1 OF 1

REVISIONS			
REV.	DESCRIPTION	DATE	APPROVED
-		11/7/2023	



Hex male adapter shown represents only one of the various end fittings available. Please refer to catalog for other options.



NOTE: UL & cULus APPROVED CONNECTORS

----- COMPONENTS LIST -----

ITEM #	QTY.	DESCRIPTION	MATERIAL
1	1	2" Quick Clamp Kit	304
2	1	1-1/2" AF4750	300 Series Stainless
3	1	2" QuickClamp Seal	Viton
4	1	1-1/2" Hex Male Adapter	304
5	1	2" Sanitary Flange	304
6	1	Hex Female	304



HOSE MASTER

1233 East 222nd Street • Cleveland, Ohio 44117
 (800) 221-2319 • Fax: (216) 481-7557 • www.hosemaster.com
 Cleveland • Houston • Atlanta • Reno

ISO 9001
Registered Quality System



DATE: 12/19/2023

DESCRIPTION:

1-1/2" x 18" OAL FIRESHEILD QUICK CLAMP ASSEMBLY

PROJECTION:



DRAWING #

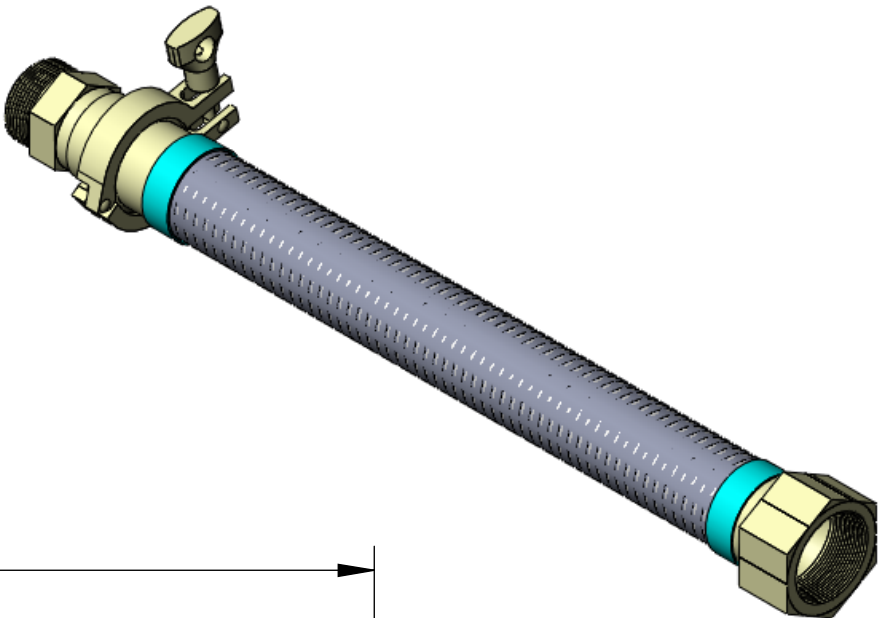
FSQF0150x18

REV.

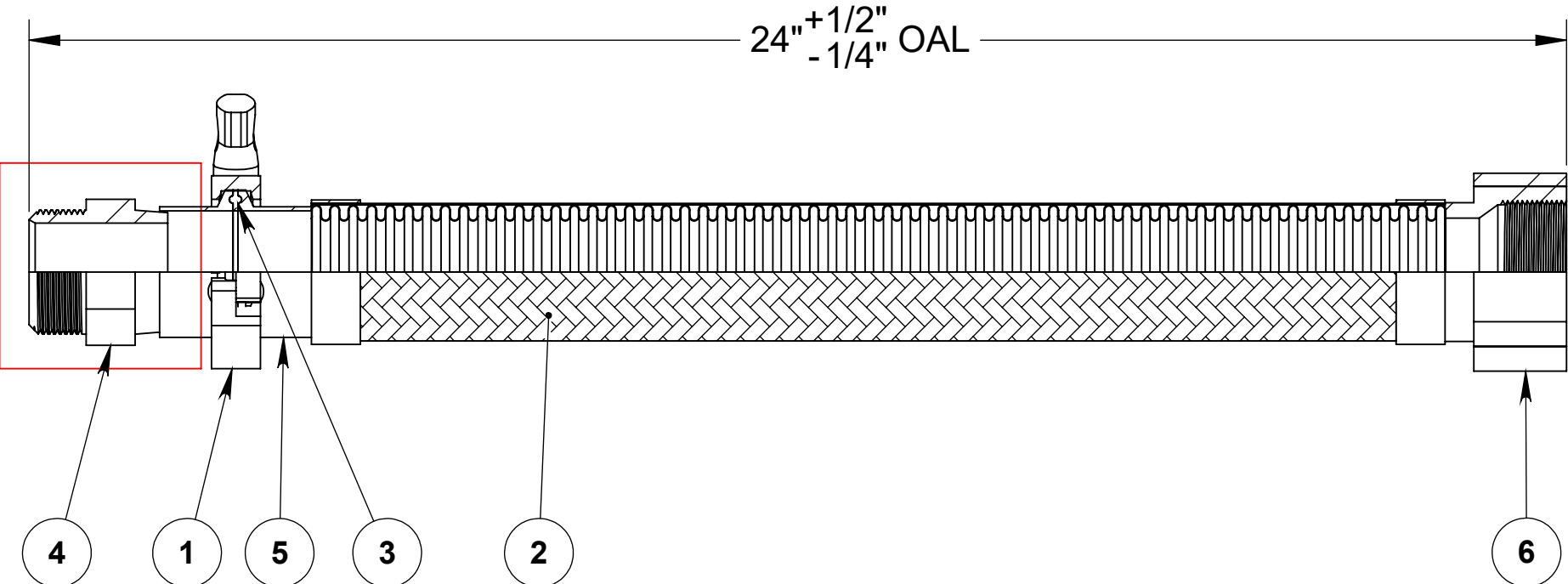
-

SHEET
1 OF 1

REVISIONS			
REV.	DESCRIPTION	DATE	APPROVED
-		11/7/2023	



Hex male adapter shown represents only one of the various end fittings available. Please refer to catalog for other options.



NOTE: UL & cULus APPROVED CONNECTORS

----- COMPONENTS LIST -----

ITEM #	QTY.	DESCRIPTION	MATERIAL
1	1	2" Quick Clamp Kit	304
2	1	1-1/2" AF4750	300 Series Stainless
3	1	2" QuickClamp Seal	Viton
4	1	1-1/2" Hex Male Adapter	304
5	1	2" Sanitary Flange	304
6	1	Hex Female	304



HOSE MASTER
 1233 East 222nd Street • Cleveland, Ohio 44117
 (800) 221-2319 • Fax: (216) 481-7557 • www.hosemaster.com
 Cleveland • Houston • Atlanta • Reno


ISO 9001
 Registered Quality System

 Listed Manufacturer

DESCRIPTION:
1-1/2" x 24" OAL FIRESHEILD QUICK CLAMP ASSEMBLY

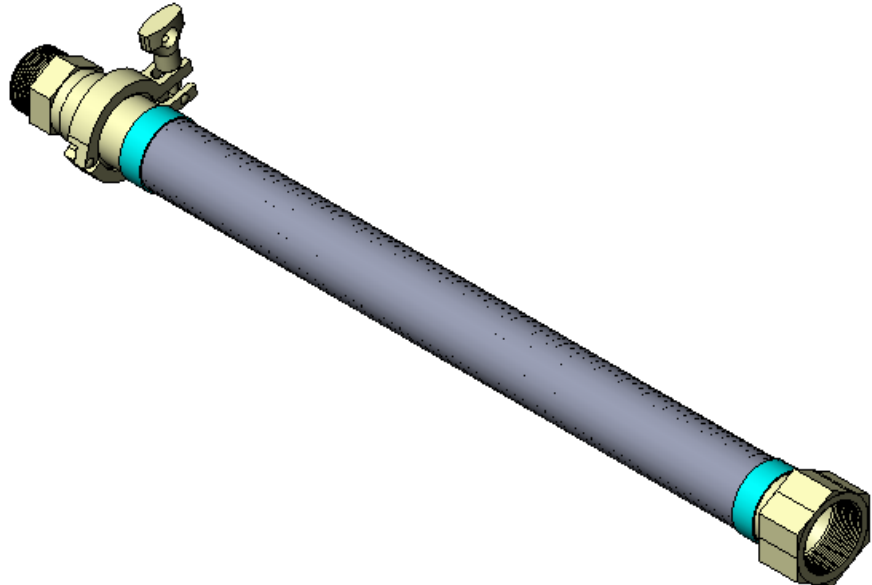
DRAWING #
FSQF0150x24

DATE: 12/19/2023

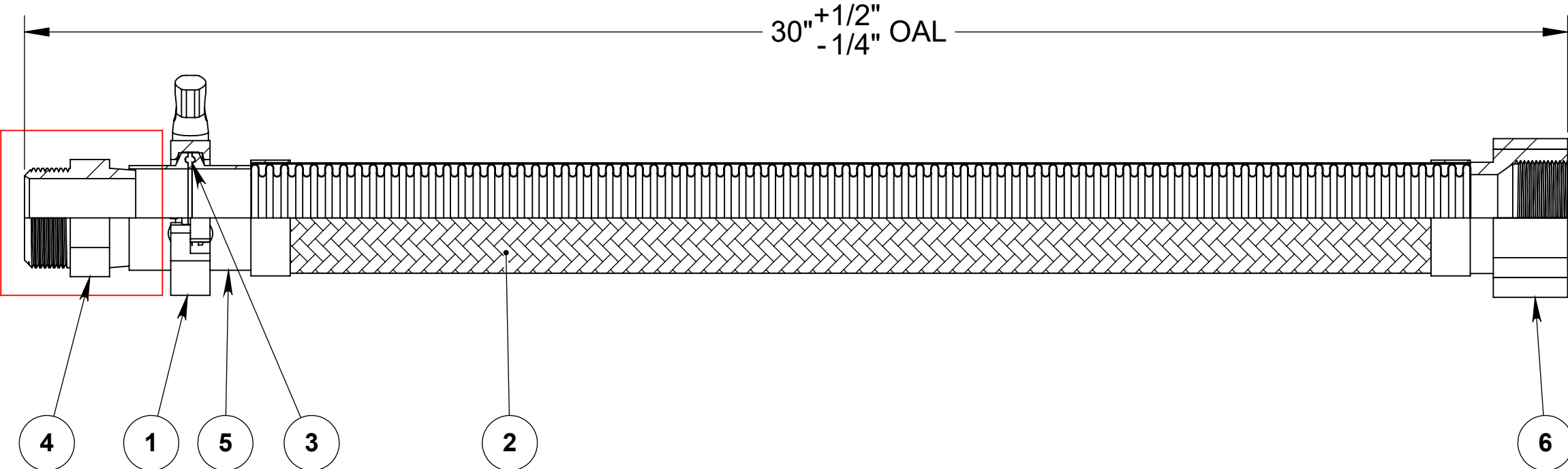
PROJECTION:


REV. - SHEET 1 OF 1

REVISIONS			
REV.	DESCRIPTION	DATE	APPROVED
-		11/7/2023	



Hex male adapter shown represents only one of the various end fittings available. Please refer to catalog for other options.



NOTE: UL & cULus APPROVED CONNECTORS

----- COMPONENTS LIST -----

ITEM #	QTY.	DESCRIPTION	MATERIAL
1	1	2" Quick Clamp Kit	304
2	1	1-1/2" AF4750	300 Series Stainless
3	1	2" QuickClamp Seal	Viton
4	1	1-1/2" Hex Male Adapter	304
5	1	2" Sanitary Flange	304
6	1	Hex Female	304



HOSE MASTER
 1233 East 222nd Street • Cleveland, Ohio 44117
 (800) 221-2319 • Fax: (216) 481-7557 • www.hosemaster.com
 Cleveland • Houston • Atlanta • Reno


ISO 9001
 Registered Quality System

 Listed Manufacturer

DESCRIPTION:
1-1/2" x 30" OAL FIRESHEILD QUICK CLAMP ASSEMBLY

DRAWING #
FSQF0150x30

DATE: 12/19/2023

PROJECTION:


REV. - SHEET 1 OF 1