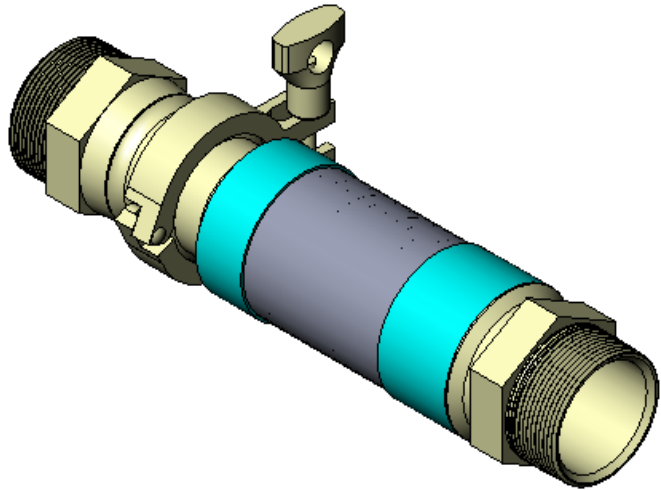
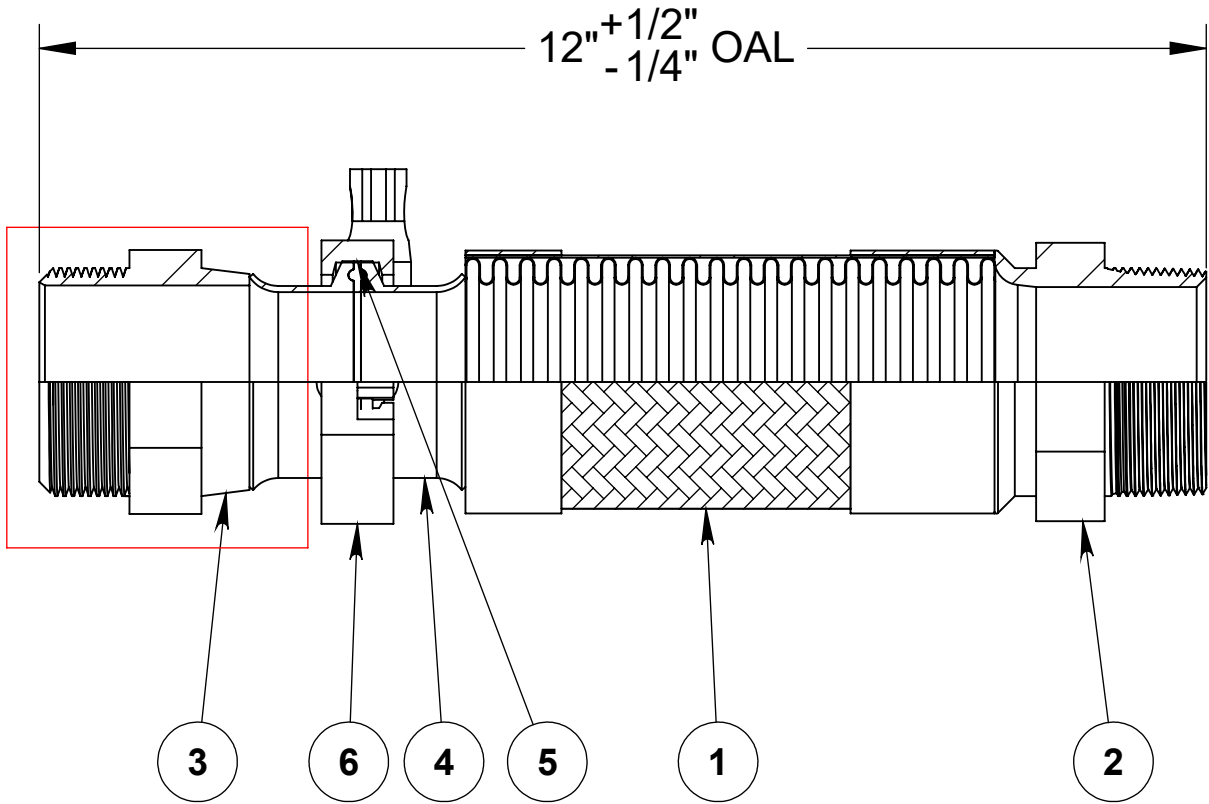


REVISIONS			
REV.	DESCRIPTION	DATE	APPROVED
-		12/1/2023	



Hex male adapter shown represents only one of the various end fittings available. Please refer to the catalog for other options.



NOTE: UL & cULus APPROVED CONNECTORS

----- COMPONENTS LIST -----

ITEM #	QTY.	DESCRIPTION	MATERIAL
1	1	2" AF4750	300 Series Stainless
2	1	2" Hex Male	304
3	1	2" Hex Male Adapter	304
4	1	2" Sanitary Flange	304
5	1	2" QuickClamp Seal	Viton
6	1	2" Quick Clamp Kit	304



HOSE MASTER

1233 East 222nd Street • Cleveland, Ohio 44117
 (800) 221-2319 • Fax: (216) 481-7557 • www.hosemaster.com
 Cleveland • Houston • Atlanta • Reno

ISO 9001
 Registered Quality System



DESCRIPTION:

2"x12" OAL FIRESHIELD QUICKCLAMP ASSEMBLY

DRAWING #

FSQM0200x12

DATE: 12/1/2023

PROJECTION:

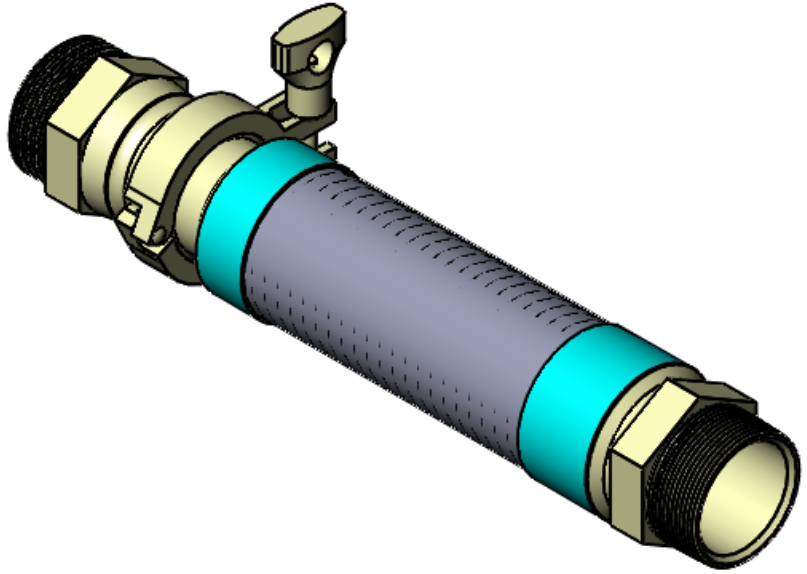


REV.

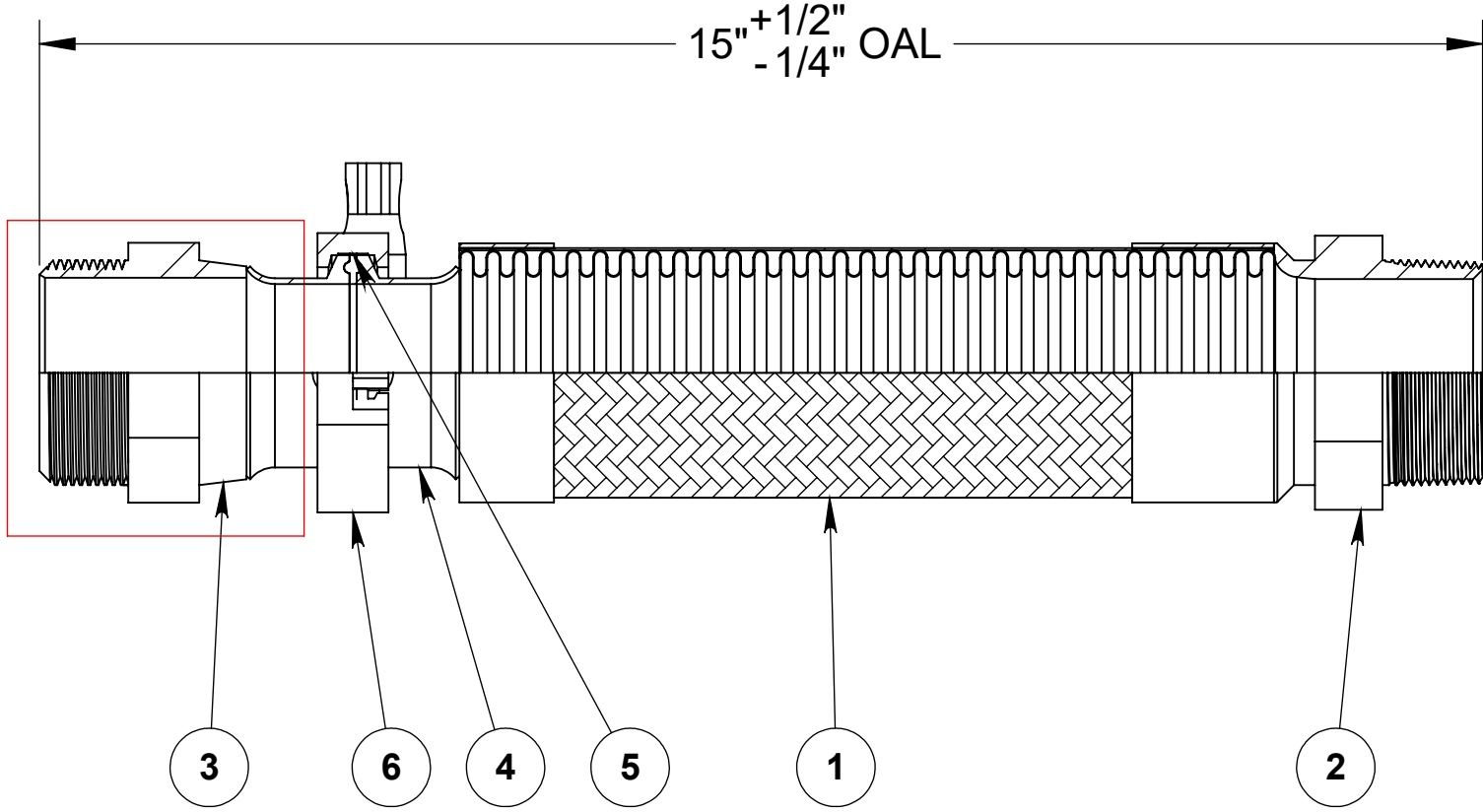
-.01

SHEET 1 OF 1

REVISIONS			
REV.	DESCRIPTION	DATE	APPROVED
-		12/1/2023	



Hex male adapter shown represents only one of the various end fittings available. Please refer to the catalog for other options.



NOTE: UL & cULus APPROVED CONNECTORS

----- COMPONENTS LIST -----

ITEM #	QTY.	DESCRIPTION	MATERIAL
1	1	2" AF4750	300 Series Stainless
2	1	2" Hex Male	304
3	1	2" Hex Male Adapter	304
4	1	2" Sanitary Flange	304
5	1	2" QuickClamp Seal	Viton
6	1	2" Quick Clamp Kit	304



HOSE MASTER

1233 East 222nd Street • Cleveland, Ohio 44117
 (800) 221-2319 • Fax: (216) 481-7557 • www.hosemaster.com
 Cleveland • Houston • Atlanta • Reno

ISO 9001
Registered Quality System



DESCRIPTION:

2"x15" OAL FIRESHIELD QUICKCLAMP ASSEMBLY

DRAWING #

FSQM0200x15

DATE: 12/1/2023

PROJECTION:

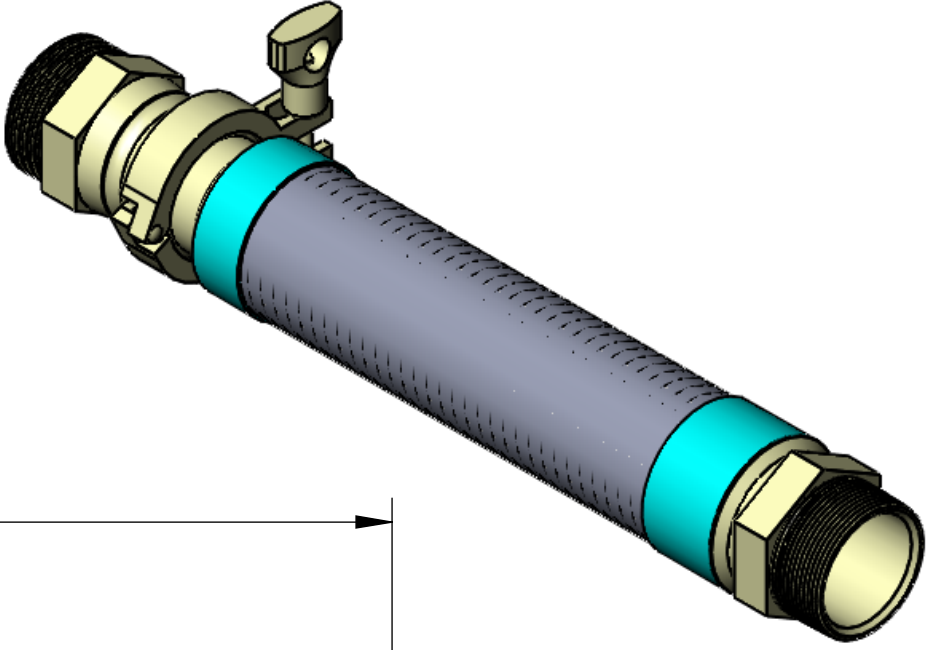


REV.

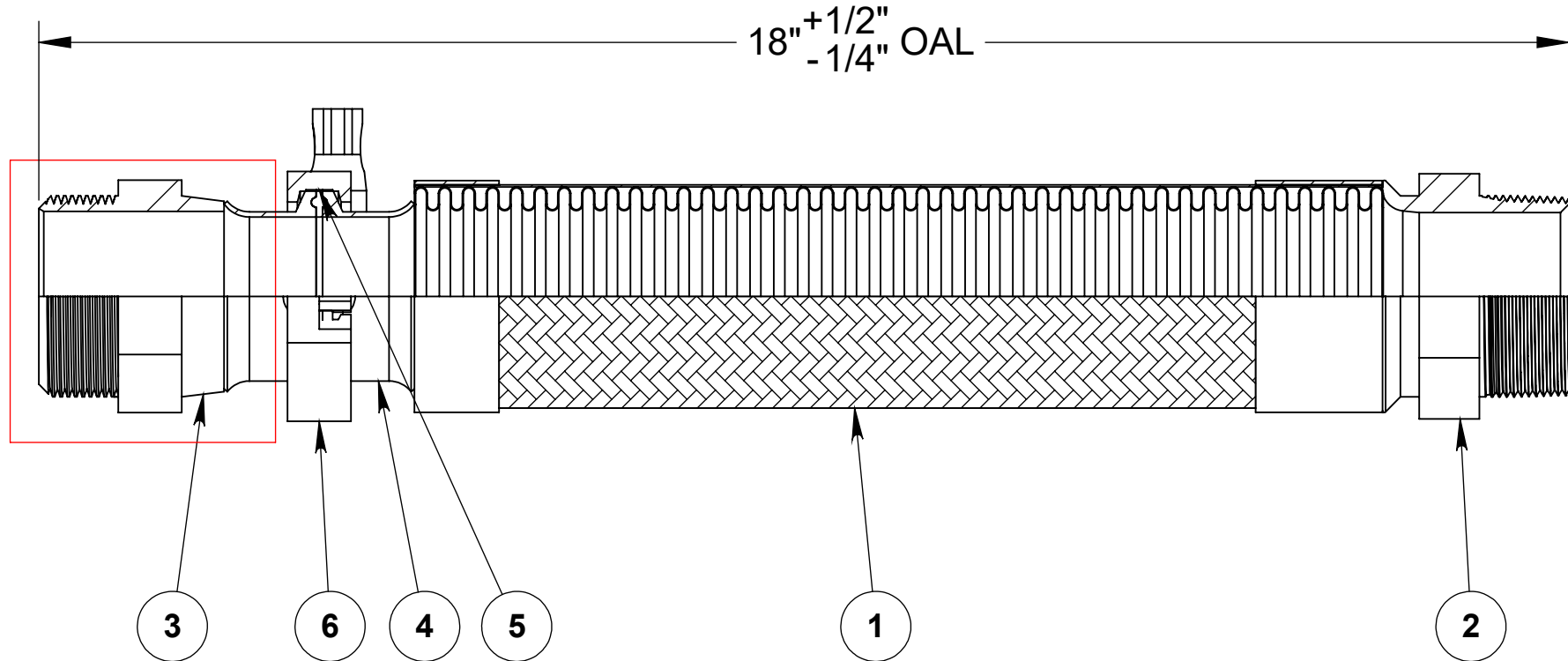
-

SHEET
1 OF 1

REVISIONS			
REV.	DESCRIPTION	DATE	APPROVED
-		12/1/2023	



Hex male adapter shown represents only one of the various end fittings available. Please refer to the catalog for other options.



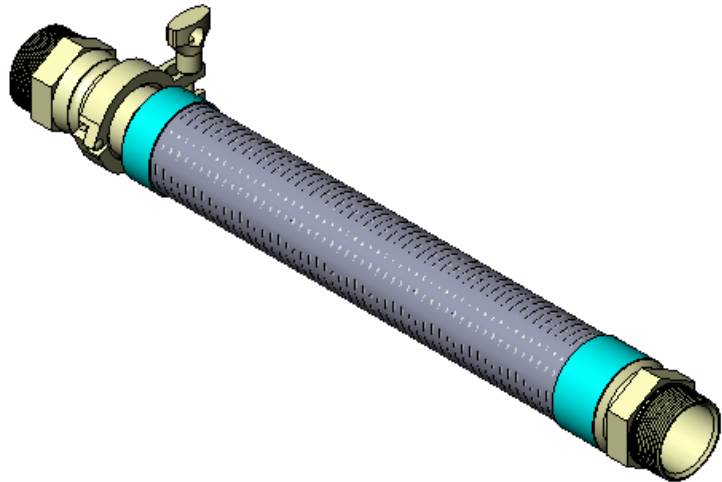
NOTE: UL & cULus APPROVED CONNECTORS

----- COMPONENTS LIST -----

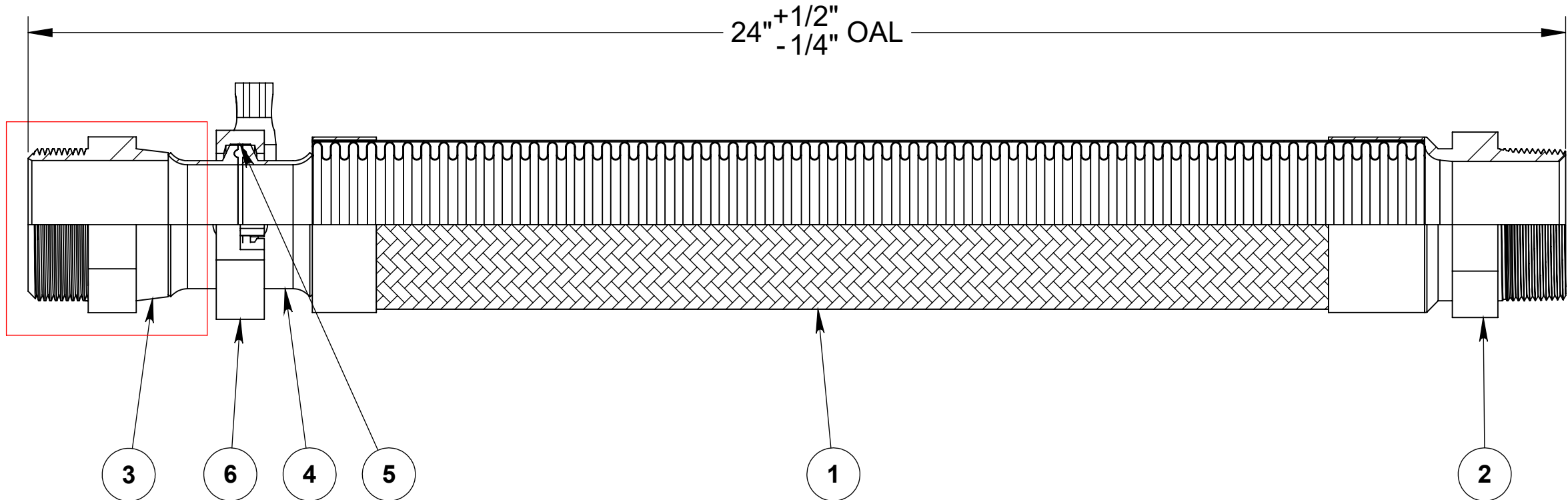
ITEM #	QTY.	DESCRIPTION	MATERIAL
1	1	2" AF4750	300 Series Stainless
2	1	2" Hex Male	304
3	1	2" Hex Male Adapter	304
4	1	2" Sanitary Flange	304
5	1	2" QuickClamp Seal	Viton
6	1	2" Quick Clamp Kit	304

	HOSE MASTER 1233 East 222nd Street • Cleveland, Ohio 44117 (800) 221-2319 • Fax: (216) 481-7557 • www.hosemaster.com Cleveland • Houston • Atlanta • Reno	ISO 9001 Registered Quality System 
	DESCRIPTION: 2"x18" OAL FIRESHIELD QUICKCLAMP ASSEMBLY	DATE: 12/1/2023 PROJECTION: 
DRAWING # FSQM0200x18	REV. -	SHEET 1 OF 1

REVISIONS			
REV.	DESCRIPTION	DATE	APPROVED
-		12/1/2023	



Hex male adapter shown represents only one of the various end fittings available. Please refer to the catalog for other options.



NOTE: UL & cULus APPROVED CONNECTORS

----- COMPONENTS LIST -----

ITEM #	QTY.	DESCRIPTION	MATERIAL
1	1	2" AF4750	300 Series Stainless
2	1	2" Hex Male	304
3	1	2" Hex Male Adapter	304
4	1	2" Sanitary Flange	304
5	1	2" QuickClamp Seal	Viton
6	1	2" Quick Clamp Kit	304




HOSE MASTER
 1233 East 222nd Street • Cleveland, Ohio 44117
 (800) 221-2319 • Fax: (216) 481-7557 • www.hosemaster.com
 Cleveland • Houston • Atlanta • Reno

ISO 9001
 Registered Quality System

 Listed Manufacturer

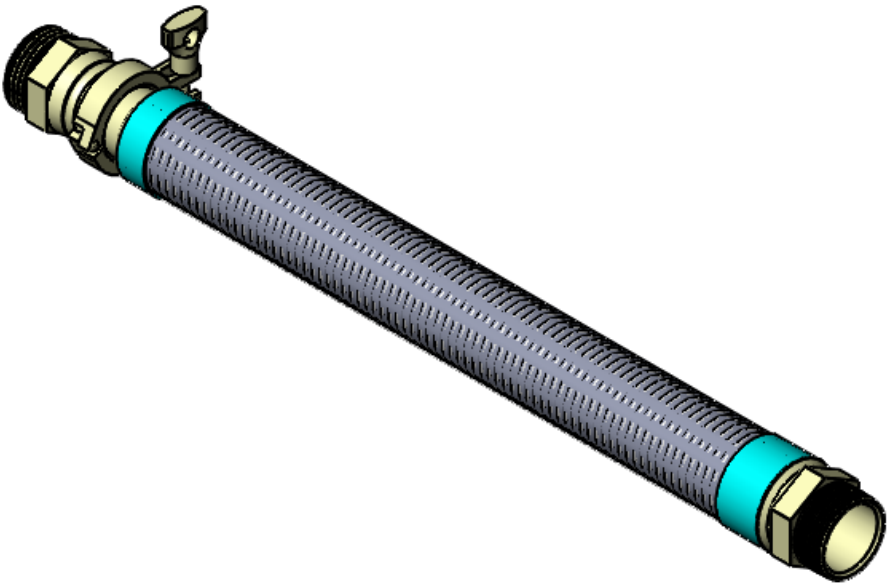
DESCRIPTION:
2"x24" OAL FIRESHIELD QUICKCLAMP ASSEMBLY

DRAWING #
FSQM0200x24

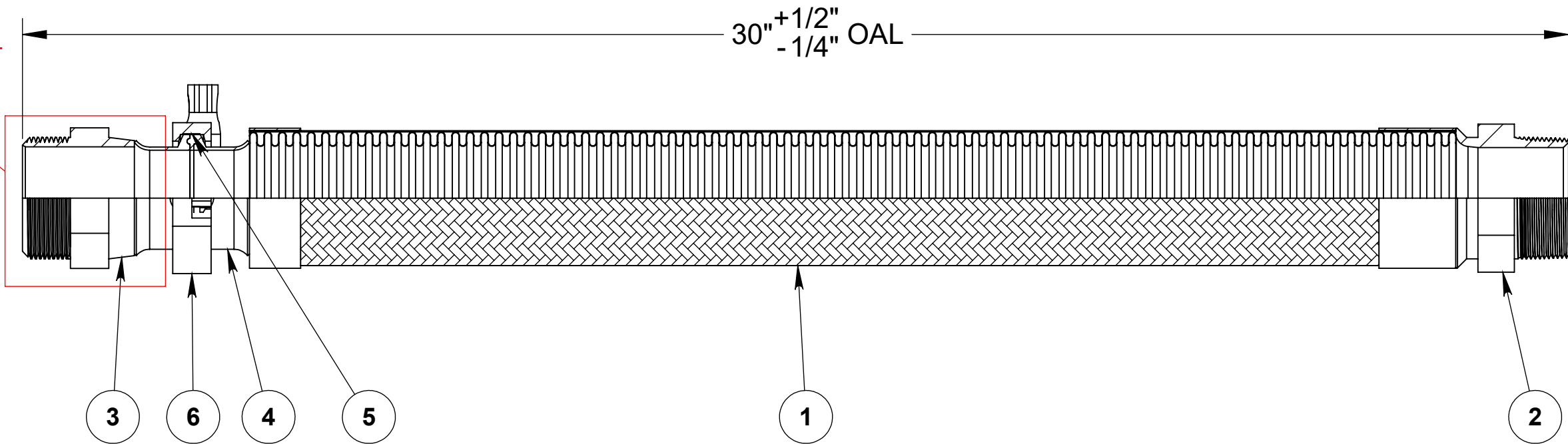
DATE: 12/1/2023
 PROJECTION:


REV.
-.01
 SHEET
1 OF 1

REVISIONS			
REV.	DESCRIPTION	DATE	APPROVED
-		12/1/2023	



Hex male adapter shown represents only one of the various end fittings available. Please refer to the catalog for other options.



NOTE: UL & cULus APPROVED CONNECTORS

----- COMPONENTS LIST -----

ITEM #	QTY.	DESCRIPTION	MATERIAL
1	1	2" AF4750	300 Series Stainless
2	1	2" Hex Male	304
3	1	2" Hex Male Adapter	304
4	1	2" Sanitary Flange	304
5	1	2" QuickClamp Seal	Viton
6	1	2" Quick Clamp Kit	304



HOSE MASTER

1233 East 222nd Street • Cleveland, Ohio 44117
 (800) 221-2319 • Fax: (216) 481-7557 • www.hosemaster.com
 Cleveland • Houston • Atlanta • Reno

ISO 9001
Registered Quality System

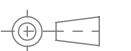


DESCRIPTION:
2"x30" OAL FIRESHIELD QUICKCLAMP ASSEMBLY

DRAWING #
FSQM0200x30

DATE: 12/1/2023

PROJECTION:



REV. - SHEET 1 OF 1